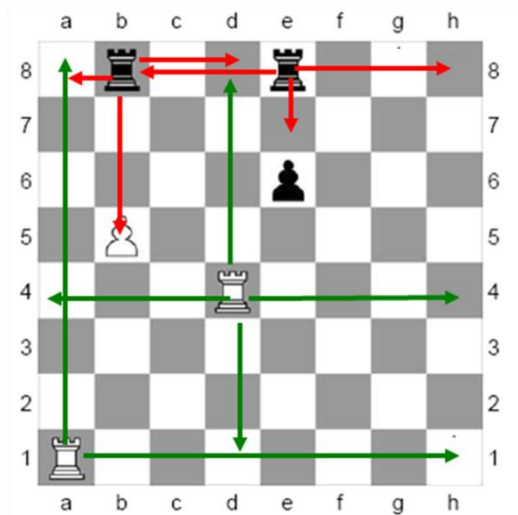


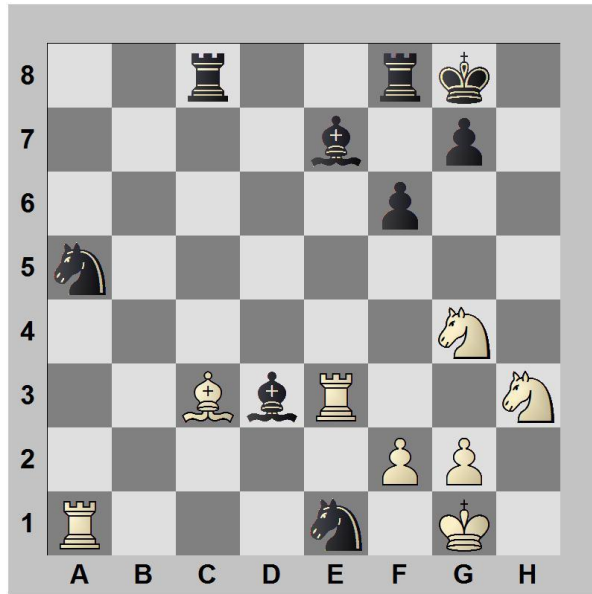
**Module 1 Task 3 Show how Rooks move and capture**

Rooks move forwards, backwards, or sideways. They can move across any amount of empty squares. Rooks are very powerful pieces and are valued at five points.



- Can the white rook (R) in the bottom left hand corner (a1) go to square a8?
- Can the white rook (R) in the bottom left hand corner (a1) go to square h1?
- Can the white rook (R) in the bottom left hand corner (a1) go to square h8?
- Can the white rook (R) on square d4 go to square g4?
- Can the white rook (R) on square d4 go to square d7?
- Can the white rook (R) on square d4 go to square d2?
- Can the black rook (R) on square b8 go to square b5?
- Can the black rook (R) on square b8 go to square b4?
- Can the black rook (R) on square e8 go to square e7?
- Can the black rook (R) on square e8 go to square e6?

Can the white rook (R) in the bottom left hand corner (a1) go to square a8? **YES**  
 Can the white rook (R) in the bottom left hand corner (a1) go to square h1? **YES**  
 Can the white rook (R) in the bottom left hand corner (a1) go to square h1? **NO that is a diagonal move that bishops (and queens make)**  
 Can the white rook (R) on square d4 go to square g4? **YES**  
 Can the white rook (R) on square d4 go to square d7? **YES**  
 Can the white rook (R) on square d4 go to square d2? **YES**  
 Can the black rook (R) on square b8 go to square b5? **YES and capture the white pawn there**  
 Can the black rook (R) on square b8 go to square b4? **NO cannot jump the pawn at b5**  
 Can the black rook (R) on square e8 go to square e7? **YES**  
 Can the black rook (R) on square e8 go to square e6? **NO that square is occupied by black's own pawn and you cannot take your own pieces!**



Set up the position shown on the chess board

#### Questions for White

- Can the rook (R) in the bottom left hand corner (a1) move to square a5?
- How many black pieces are attacked by the white rook on square e3?
- How many moves can each white rook make?

#### Questions for Black

- Only one white piece is attacked by the black rooks - what is it?
- Can the black rook on f8 move to f6?
- How many moves can each black rook make?

**Answers for White**

Can the rook (R) in the bottom left hand corner (a1) move to square a5? **YES** this captures the black knight (N)

How many black pieces are attacked by the white rook on square e3? **3**, both bishops and one knight

How many moves can each white rook make? **One rook can move to 5 squares and the other can move to 8 squares**

**Answers for Black**

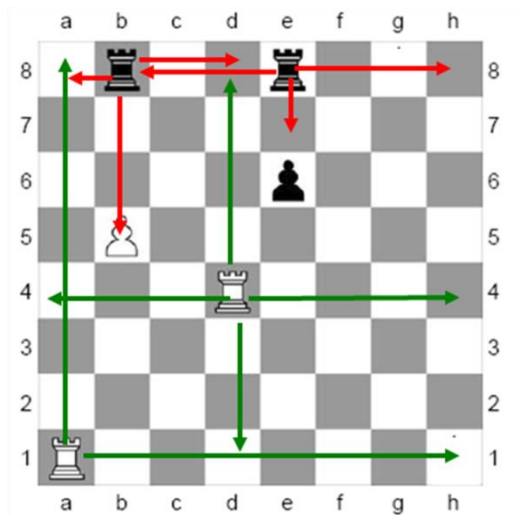
Only one white piece is attacked by the black rooks - what is it? **The white bishop at c3 is attacked by the black rook at c8**

Can the black rook on f8 move to f6? **NO**, that square is occupied by Black's own pawn

How many moves can each black rook make? **One rook can move to 9 squares and the other can move to 3 squares**

**Module 1 Task 3 Show how Rooks move and capture**

Rooks move forwards, backwards, or sideways. They can move across any amount of empty squares. Rooks are very powerful pieces and are valued at five points.



- Can the white rook (R) in the bottom left hand corner (a1) go to square a8?
- Can the white rook (R) in the bottom left hand corner (a1) go to square h1?
- Can the white rook (R) in the bottom left hand corner (a1) go to square h8?
- Can the white rook (R) on square d4 go to square g4?
- Can the white rook (R) on square d4 go to square d7?
- Can the white rook (R) on square d4 go to square d2?
- Can the black rook (R) on square b8 go to square b5?
- Can the black rook (R) on square b8 go to square b4?
- Can the black rook (R) on square e8 go to square e7?
- Can the black rook (R) on square e8 go to square e6?

Can the white rook (R) in the bottom left hand corner (a1) go to square a8? **YES**

Can the white rook (R) in the bottom left hand corner (a1) go to square h1? **YES**

Can the white rook (R) in the bottom left hand corner (a1) go to square h1? **NO that is a diagonal move that bishops (and queens make)**

Can the white rook (R) on square d4 go to square g4? **YES**

Can the white rook (R) on square d4 go to square d7? **YES**

Can the white rook (R) on square d4 go to square d2? **YES**

Can the black rook (R) on square b8 go to square b5? **YES and capture the white pawn there**

Can the black rook (R) on square b8 go to square b4? **NO cannot jump the pawn at b5**

Can the black rook (R) on square e8 go to square e7? **YES**

Can the black rook (R) on square e8 go to square e6? **NO that square is occupied by black's own pawn and you cannot take your own pieces!**



Set up the position shown on the chess board

### Questions for White

- Can the rook (R) in the bottom left hand corner (a1) move to square a5?
- How many black pieces are attacked by the white rook on square e3?
- How many moves can each white rook make?

### Questions for Black

- Only one white piece is attacked by the black rooks - what is it?
- Can the black rook on f8 move to f6?
- How many moves can each black rook make?

**Answers for White**

Can the rook (R) in the bottom left hand corner (a1) move to square a5? **YES** this captures the black knight (N)

How many black pieces are attacked by the white rook on square e3? **3**, both bishops and one knight

How many moves can each white rook make? **One rook can move to 5 squares and the other can move to 8 squares**

**Answers for Black**

Only one white piece is attacked by the black rooks - what is it? **The white bishop at c3 is attacked by the black rook at c8**

Can the black rook on f8 move to f6? **NO**, that square is occupied by Black's own pawn

How many moves can each black rook make? **One rook can move to 9 squares and the other can move to 3 squares**