

Building attacking themes - 2

Attack against the castled King (2)

Another way to attack the castled King is to open a file for the 'heavy' pieces (R or Q). The h file (from square h1-h8) is particularly vulnerable. If you are attacking as Black then you look at the file the other way round (from h8 to h1).

Look at position (a). White has two choices for a simple mate in 1 move - what are they?

(a)



Now to position (b). White has a straightforward mate in 1 using the power of the connected rooks controlling the h-file. What is the move that finished the game?

(b)



(c)

In position (c) the black Knights on f6 and g6 seem to protect the mating squares at h7 and h8 - but is this true? How does White deliver checkmate in

just 2 moves?



(d)

In position (d) White has control of the h file and can deliver mate with 3 successive checks. Can you calculate the correct combination?



See all answers [HERE](#)

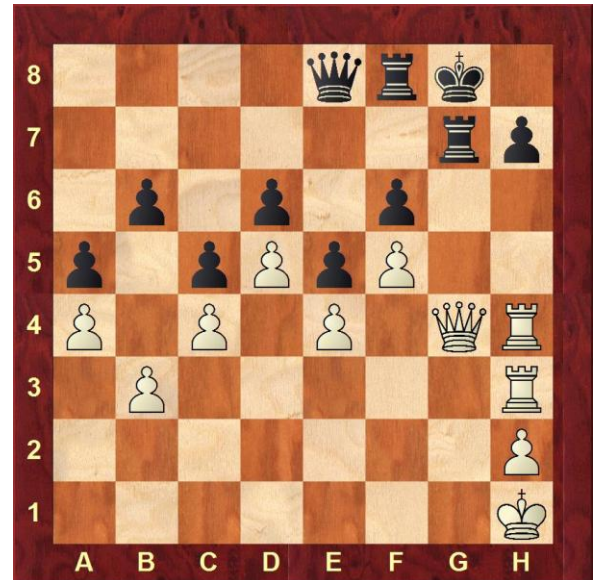
The Novice and Intermediate problems below continue the theme of control of the h-file. How many can you solve?

This month's problems - Novice
Problem N37

Problem N38



N37 White to play and win



N38 Find the winning moves for White

This month's problems - Intermediate

Problem 137

Problem 138



137 How should Black continue to attack?

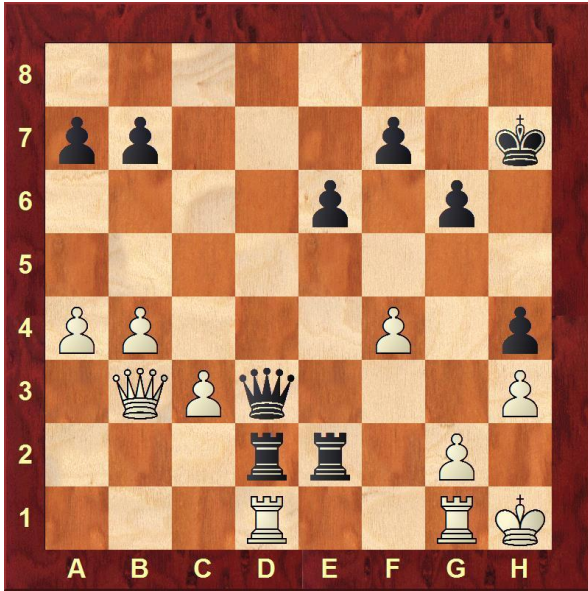


138 Can you find a winning attack for White?

Solutions to last month's problems - Novice

Problem N35

Problem N36

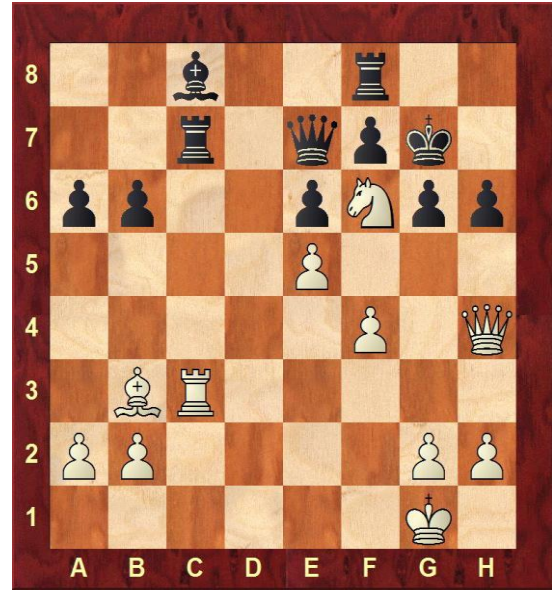


N35 Black to play and win

Answer:

White plays

1. Qxh3+ gxh3 (forced)
2. Rh2#



**N36 (a) White to play and win
(b) What is the theme of the two Novice problems?**

Answer:

(a) White plays

1. Qxh6+ Kxh6 (forced)
2. Rh3+ Kg7 (forced)
3. Rh7#

(b) theme of Queen sacrifice leading to forced mate

Solutions to last month's problems - Intermediate
Problem 135



Problem 136



I 35 White play and win

Answer:

1. Rc2 Qh3 (or Qb4)
2. Bb5 forks Q and R and wins exchange

Note that

- 2..... Qxc5 loses the queen for 2 Bishops to the discovered attack with
3. Bxf7+

I 35 What is the best move for Black?

2 Answer:

- 1..... Rxb3+
2. Kxb3 Rb8+
3. K moves Qa5#

Answers to Attack on castled King Problems-2 (return to Problems [HERE](#))

(a) White simply plays

1. Qh7# or Qh8#

(b) Again quite simple, Rh8#

(c) With 3 of White's pieces controlling the h-file the two Black knights can resist an attack led by a Queen sacrifice!

1. Qh8+ Nxh8
2. Rxh8#

(d) Just need to remove the Black N and those 2 powerful White Rooks will deliver mate. So,

1. Qxf8+ Kxf8
2. Rh8+ K moves to 7th rank
3. R1h7# (the notation indicates that the rook on h1 is the one that moves to h7 to give check mate)

If you solved these 4 problems on attacking the King then see if you can introduce these types of attacks into your games. Remember Black can also attack down the h-file against the castled White king!